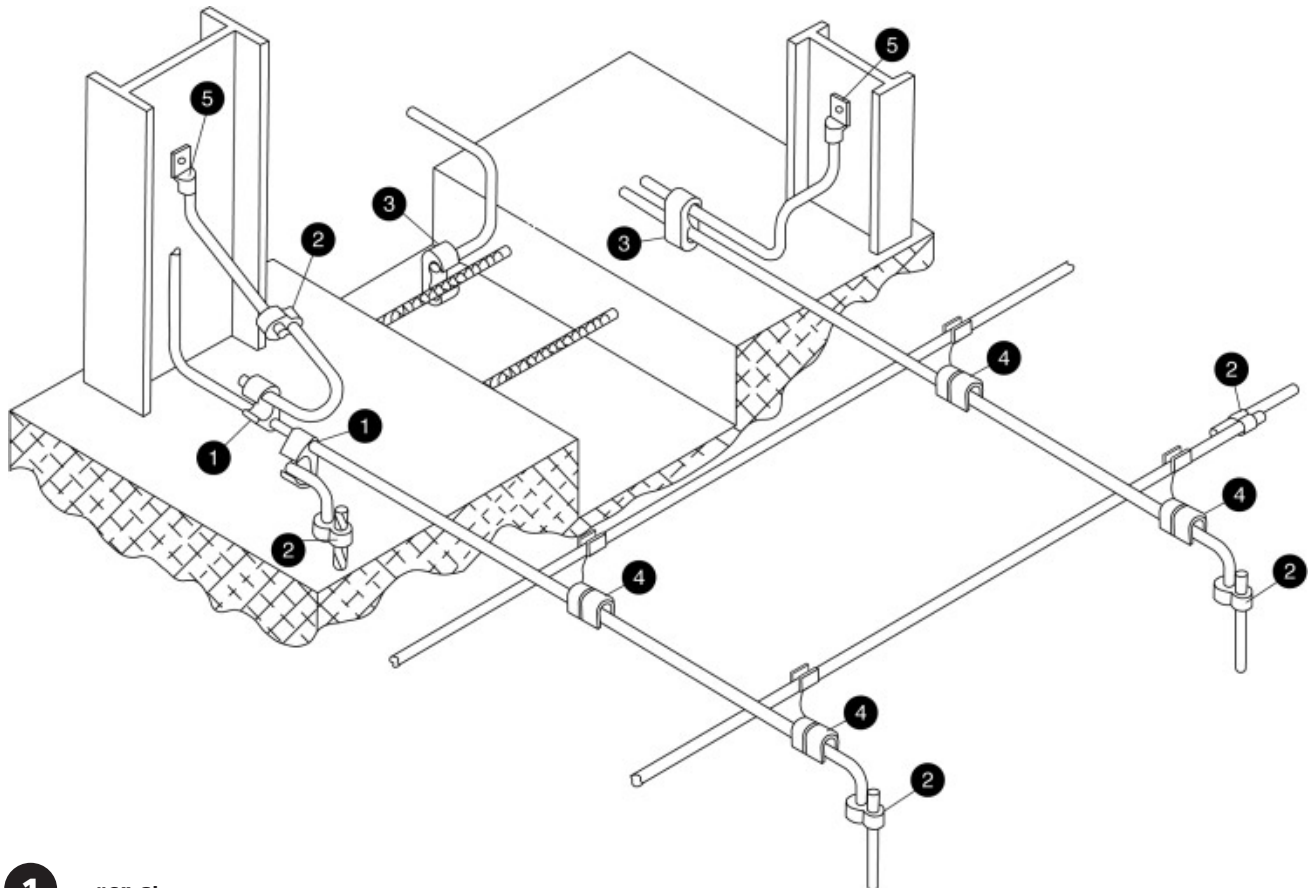


Compression connectors produce very robust joints which can be buried in the ground or in concrete. They are ideal for use in situations where exothermic welding is not appropriate and periodic disconnection is not required. A compression tool is required to make each joint – details of our manual hydraulic and battery powered tools and cutting tools can be found on pages 75-76.

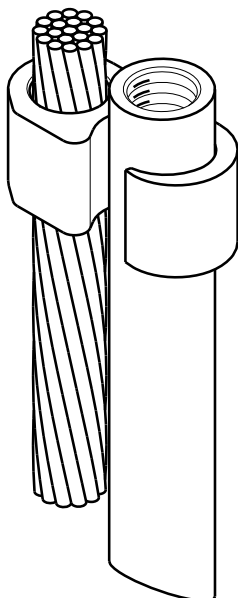


Connector selector



- 1** "6" Shape connectors
- 2** "8" Shape connectors
- 3** "C" Shape connectors
- 4** Grid connectors
- 5** Terminals

Compression connectors

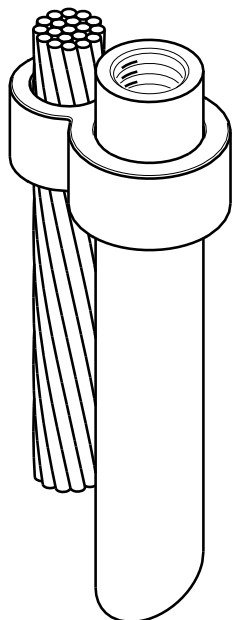


"6" Shape connectors

Conductor	Main Rod	Conductor range	Die Part no.	Connector Part no.
50 – 120mm ²	½" – ⅝"	25 – 35mm ²	15G86R	54855
50 – 120mm ²	½" – ⅝"	50 – 70mm ²	15G86R	54860
50 – 120mm ²	½" – ⅝"	95 – 120mm ²	15G86R	54865-CK
16 – 35mm ²	-	16 – 35mm ²	15501A	54875
120 – 240mm ²	⅝" – ¾"	25 – 35mm ²	15G126R	54890
120 – 240mm ²	⅝" – ¾"	95 – 120mm ²	15G121R	54895
-	⅝" – ¾"	185 – 240mm ²	15G121R	54800
120 – 240mm ²	-	185 – 240mm ²	15G121R	54900

Can also be used to connect cable to steel reinforcing bar.

Use with tools TBM14M, TBM15I, TBM14BSCR and TBM15BSCR.



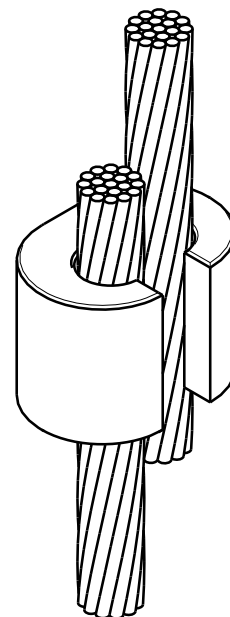
"8" Shape connectors

Nominal rod conductor	Conductor range	Die Part no.	Connector Part no.
1"	150 – 240mm ²	15G121R	GR1-300500
¾"	150 – 240mm ²	15G121R	GR34-300500
⅝"	150 – 240mm ²	15G121R	GR58-300500
1"	70 – 150mm ²	15G121R	GR1-40250
¾"	70 – 150mm ²	15G121R	GR34-40250
⅝"	70 – 150mm ²	15G121R	GR58-40250
½"	70 – 150mm ²	15G121R	GR12-40250
1"	35 – 70mm ²	15G121R	GR1-202
¾"	35 – 70mm ²	15G121R	GR34-202
⅝"	35 – 70mm ²	15G121R	GR58-202
½"	35 – 70mm ²	15G121R	GR12-202

Use with tools TBM14M, TBM15I, TBM14BSCR and TBM15BSCR.

"C" Shape connectors

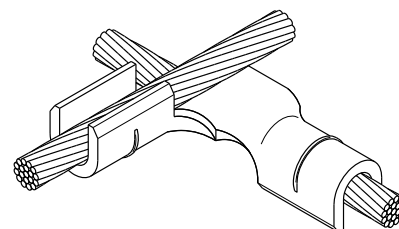
Main conductor	Conductor range	Die Part No.	Disc colour code	Connector Part no.
50mm ²	35 – 50mm ²	15512	Blue	54755
70mm ²	16 – 50mm ²	15512	Blue	54755
95mm ²	10 – 35mm ²	15512	Blue	54755
70mm ²	25 – 70mm ²	15506	Brown	54760
120mm ²	10 – 50mm ²	15506	Brown	54760
70mm ²	35 – 70mm ²	15505	Pink	54765
120mm ²	16 – 70mm ²	15505	Pink	54765
120mm ²	10 – 70mm ²	15505	Pink	54765
95mm ²	70 – 95mm ²	15515	Black	54770
120mm ²	35 – 120mm ²	15515	Black	54770
185mm ²	16 – 70mm ²	15515	Black	54770
150mm ²	70 – 150mm ²	15504	Yellow	54775
185mm ²	50 – 185mm ²	15504	Yellow	54775
240mm ²	16 – 120mm ²	15504	Yellow	54775
185mm ²	95 – 185mm ²	15603	White	54780
185mm ²	70 – 185mm ²	15603	White	54780
240mm ²	35 – 240mm ²	15603	White	54780



Use with tools TBM14M, TBM15I, TBM14BSCR and TBM15BSCR.

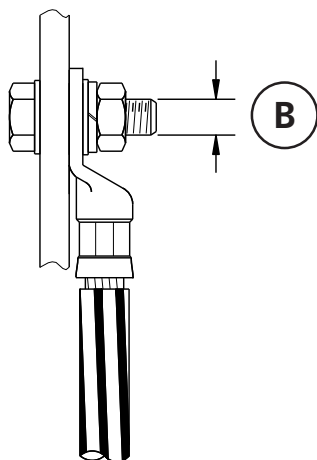
Grid connectors

Main conductor	Die	Conductor range	Die	Connector Part no.
35mm ²	45	35mm ²	45	GG21-21
50mm ²	54	50mm ²	54	GG10-10
70mm ²	60	35mm ²	45	GG2030-21
70mm ²	60	50mm ²	54	GG2030-10
70mm ²	60	70mm ²	60	GG2030-2030
95 – 120mm ²	71	35mm ²	45	GG40250-21
95 – 120mm ²	71	50mm ²	54	GG40250-10
95 – 120mm ²	71	70mm ²	60	GG40250-2030
95 – 120mm ²	71	95 – 120mm ²	71	GG40250-40250
185mm ²	80H	185mm ²	80H	GG350-350
240mm ²	87	120mm ²	71	GG500-40250
240mm ²	87	240mm ²	87	GG500-500
240mm ²	87H	185mm ²	80H	GG500-350
240mm ²	87H	70mm ²	60	GG500-2030



Use with tools TBM14M, TBM15I, TBM14BSCR and TBM15BSCR.

Compression connectors



Terminals

Conductor size	Screw size (B)	Weight each	Part no.
16mm ²	6mm	0.01kg	FCT166
16mm ²	8mm	0.01kg	FCT168
16mm ²	10mm	0.01kg	FCT1610
16mm ²	12mm	0.01kg	FCT1612
25mm ²	6mm	0.01kg	FCT256
25mm ²	8mm	0.01kg	FCT258
25mm ²	10mm	0.01kg	FCT2510
25mm ²	12mm	0.01kg	FCT2512
35mm ²	6mm	0.01kg	FCT356
35mm ²	8mm	0.01kg	FCT358
35mm ²	10mm	0.01kg	FCT3510
35mm ²	12mm	0.01kg	FCT3512
50mm ²	6mm	0.02kg	FCT506
50mm ²	8mm	0.02kg	FCT508
50mm ²	10mm	0.02kg	FCT5010
50mm ²	12mm	0.02kg	FCT5012
70mm ²	8mm	0.04kg	FCT708
70mm ²	10mm	0.04kg	FCT7010
70mm ²	12mm	0.04kg	FCT7012
70mm ²	14mm	0.04kg	FCT7014
70mm ²	16mm	0.04kg	FCT7016
95mm ²	8mm	0.06kg	FCT958
95mm ²	10mm	0.06kg	FCT9510
95mm ²	12mm	0.06kg	FCT9512
95mm ²	14mm	0.06kg	FCT9514
95mm ²	16mm	0.06kg	FCT9516
120mm ²	10mm	0.06kg	FCT12010
120mm ²	12mm	0.06kg	FCT12012
120mm ²	14mm	0.06kg	FCT12014
120mm ²	16mm	0.06kg	FCT12016
150mm ²	10mm	0.09kg	FCT15010
150mm ²	12mm	0.09kg	FCT15012
150mm ²	14mm	0.09kg	FCT15014
150mm ²	16mm	0.09kg	FCT15016
185mm ²	12mm	0.11kg	FCT18512
185mm ²	14mm	0.11kg	FCT18514
185mm ²	16mm	0.11kg	FCT18516
240mm ²	12mm	0.14kg	FCT24012
240mm ²	14mm	0.14kg	FCT24014
240mm ²	16mm	0.14kg	FCT24016
300mm ²	12mm	0.17kg	FCT30012
300mm ²	14mm	0.17kg	FCT30014
300mm ²	16mm	0.17kg	FCT30016
400mm ²	12mm	0.21kg	FCT40012
400mm ²	14mm	0.21kg	FCT40014
400mm ²	16mm	0.21kg	FCT40016

Use with tool JB12B.