

Square tape clamp **NEW**

| Conductor size | Material | Weight each | Part No. |
|----------------|----------|-------------|----------------------|
| 25 x 3mm | Copper | 0.12kg | CT105-H [†] |
| 25 x 6mm | Copper | 0.30kg | CT110-H [†] |
| 50 x 6mm | Copper | 0.60kg | CT115-H [†] |

Manufactured from high quality copper and aluminium alloys. Simple to install, providing an effective low resistance connection between overlapping tapes to allow cross, tee, through and right angle joints to be formed.



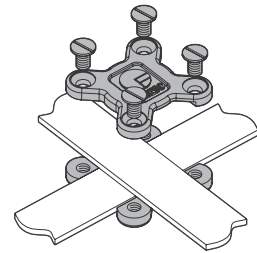
BS EN 50164-1 Class H, BS 7430
[†]UL96 (CT105-H, CT110-H, CT115-H)



Fix using countersunk wood screws 1½" No. 10 or M6 (Part no. **SW005** or **SW105**) and wall plugs (Part no. **PS305**) – see Accessories.



Tightening torque 5Nm



DC tape clip

Use with bare copper

| Conductor size | Weight each | Part No. |
|----------------|-------------|----------|
| 20 x 3mm | 0.06kg | CP205 |
| 25 x 4mm | 0.07kg | CP216 |
| 30 x 5mm | 0.10kg | CP227 |
| 38 x 5mm | 0.12kg | CP245 |
| 40 x 4mm | 0.14kg | CP241 |
| 50 x 4mm | 0.15kg | CP256 |

Use with PVC covered copper

| Conductor size | Weight each | Part No. |
|----------------|-------------|----------|
| 25 x 3mm | 0.10kg | CP215 |
| 25 x 6mm | 0.13kg | CP225 |
| 50 x 6mm | 0.26kg | CP265 |

Use with lead covered copper

| Conductor size | Weight each | Part No. |
|----------------|-------------|----------|
| 25 x 3mm | 0.20kg | CP305 |

DC tape clips manufactured from high quality copper and aluminium alloys for excellent corrosion resistance and high pull off loads.



Swing lid DC tape clip – Use with bare copper

| Conductor size | Weight each | Part No. | |
|----------------|-------------|----------------------|------------|
| 25 x 3mm | 0.07kg | CP210-H [†] | NEW |
| 25 x 6mm | 0.08kg | CP220-H [†] | NEW |



Fix using countersunk wood screws 1½" No. 10 or M6 (Part no. **SW005** or **SW105**) and wall plugs (Part no. **PS305**) – see Accessories.



[†]UL96 (CP210-H, CP220-H)



Adjustable DC tape clip **NEW**

Use with bare copper

| Conductor size | Weight each | Part No. |
|--|-------------|----------------------|
| 31 x 3mm and 31 x 6mm – use with bare copper | 0.10kg | CP230-H |
| 38 x 3mm, 38 x 6mm and 40 x 6mm – use with bare copper | 0.12kg | CP240-H |
| 50 x 3mm and 50 x 6mm – use with bare copper | 0.16kg | CP260-H [†] |

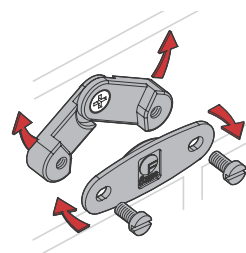
DC tape clips manufactured from high quality copper and aluminium alloys for excellent corrosion resistance and high pull off loads.



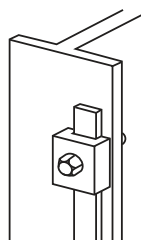
Fix using countersunk wood screws 1½" No. 10 or M6 (Part no. **SW005** or **SW105**) and wall plugs (Part no. **PS305**) – see Accessories.



[†]UL96 (CP260-H)



Fixings, bonds and clamps



'B' bond

| Maximum tape width | Bolt size | Conductor material | Weight each | Part No. |
|--------------------|-----------|--------------------|-------------|--------------|
| 26mm | M10 | Copper | 0.12kg | BN105 |
| 26mm | M10 | Aluminium | 0.06kg | BN005 |
| 31mm | M10 | Copper | 0.15kg | BN113 |

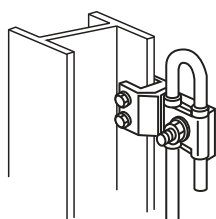
For bonding tape to steel structures.



BS EN 50164-1 Class H, BS 7430



Tightening torque 17Nm



Metalwork bond

| Conductor diameter | Conductor material | Weight each | Part No. |
|--------------------|--------------------|-------------|--------------|
| 8mm | Copper | 0.37kg | CS350 |
| 8mm | Aluminium | 0.17kg | CS355 |

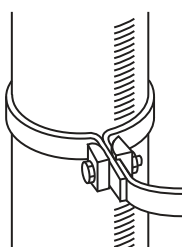
For connecting to all types of metal structures up to 13mm thickness.



BS EN 50164-1 Class H, BS 7430



Tightening torque – M8 bolt: 10Nm, M10 bolt: 12Nm



RWP bond

| Maximum tape width | Bolt size | Conductor material | Weight each | Part No. |
|--------------------|-----------|--------------------|-------------|--------------|
| 26mm | M10 | Copper | 0.12kg | BN115 |
| 26mm | M10 | Aluminium | 0.07kg | BN010 |

For bonding tape to rainwater pipes, handrails etc.



BS 7430

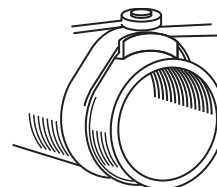
Watermain bond

| Maximum tape width | Conductor material | Weight each | Part No. |
|--------------------|--------------------|-------------|----------|
| 26mm | Copper | 0.26kg | BN120 |

For bonding tape to large diameter pipes.



BS 7430



Pipe bond

| Conductor diameter | Pipe diameter | Conductor material | Weight each | Part No. |
|--------------------|---------------|--------------------|-------------|----------|
| 8mm | 50 – 200mm | Copper | 0.46kg | BN175 |
| 8mm | 50 – 200mm | Aluminium | 0.25kg | BN176 |

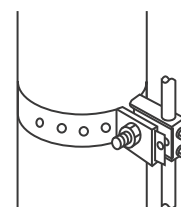
For bonding to ducts and large diameter pipeworks.



BS EN 50164-1 Class H, BS 7430

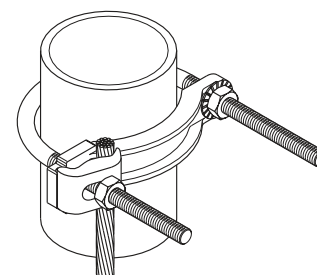


Tightening torque – M6 bolt: 6Nm, M10 bolt: 12Nm



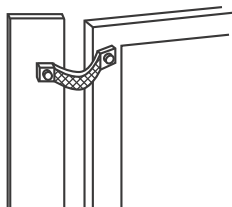
Pipe clamp

| Pipe diameter | Conductor range | Weight each | Part No. | |
|---------------|-----------------|------------------------|----------|---------|
| ½" – 1" | 13 – 25mm | 25 – 95mm ² | 0.3kg | 3902 |
| 1¼" – 2" | 32 – 50mm | 25 – 95mm ² | 0.4kg | 3903 |
| 2½" – 3½" | 65 – 90mm | 25 – 95mm ² | 0.5kg | 3904 |
| 4" – 5" | 100 – 125mm | 25 – 95mm ² | 0.6kg | 3905-TB |
| 6" | 150mm | 25 – 95mm ² | 0.8kg | 3906-TB |
| 8" | 200mm | 25 – 95mm ² | 1.0kg | 3907 |
| 10" | 250mm | 25 – 95mm ² | 1.1kg | 3908 |
| 12" | 300mm | 25 – 95mm ² | 1.5kg | 3909-TB |



TSC-0808 Web updated 31.01.11

Fixings, bonds and clamps



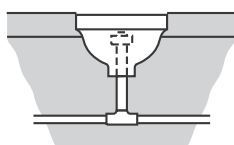
Flexible copper braid bond

| Overall braid dimensions | Hole size | Hole centres | Weight each | Part No. |
|--------------------------|-----------|--------------|-------------|--------------|
| 25 x 3.5mm | 11mm | 200mm | 0.09kg | BN505 |
| 25 x 3.5mm | 11mm | 400mm | 0.15kg | BN510 |

Flexible copper braid for bonding gates, doors, fences etc. Equivalent cross sectional area 35mm². Other materials, lengths and sections available as special items.



BS 7430



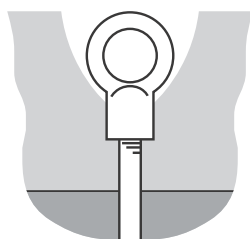
Static earth receptacle

| Conductor material | Weight each | Part No. |
|--------------------|-------------|--------------|
| Copper | 0.64kg | RX005 |

For setting into roadways or runways. Provides a static discharge point for aircraft, fuel tankers, etc.



BS 7430



Eyebolt

| Nominal copperbond rod diameter | Weight each | Part No. |
|---------------------------------|-------------|--------------|
| 5/8" | 0.52kg | BT150 |
| 3/4" | 0.52kg | BT160 |

Screws direct onto a copperbond earth rod, offering an earth point for boats, trucks etc.



BS 7430

Straight setscrew type cable socket

| Conductor diameter | Palm hole diameter | Conductor material | Weight each | Part No. |
|--------------------|--------------------|--------------------|-------------|--------------|
| 8mm | 12mm | Copper | 0.11kg | SX450 |
| 8mm | 12mm | Aluminium | 0.05kg | SX455 |

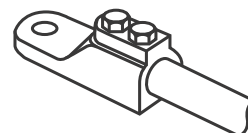
For bonding copper and aluminium conductors to steelwork.



BS EN 50164-1 Class H



Tightening torque 3Nm



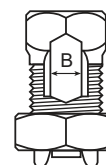
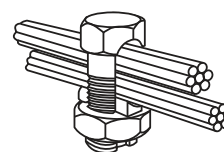
Type H – High strength splitbolt connector

| Conductor range | | | | Dimension B | Weight each | Part No. |
|-------------------|--------------------|--------------------|--------------------|----------------|----------------|----------------|
| Main | | Tap | | | | |
| Min | Max | Min | Max | | | |
| 4mm ² | 10mm ² | 2.5mm ² | 10mm ² | 4.1mm | 0.02kg | 8H-FU |
| 10mm ² | 16mm ² | 2.5mm ² | 16mm ² | 5.5mm | 0.03kg | 4H-FU |
| 16mm ² | 25mm ² | 4mm ² | 25mm ² | 6.9mm | 0.04kg | 2H-FU |
| 25mm ² | 35mm ² | 4mm ² | 35mm ² | 8.4mm | 0.06kg | 1H-FU |
| 35mm ² | 50mm ² | 4mm ² | 50mm ² | 9.7mm | 0.09kg | 10H-FU |
| 35mm ² | 70mm ² | 4mm ² | 70mm ² | 11.2mm | 0.14kg | 20H-FU |
| 50mm ² | 95mm ² | 4mm ² | 95mm ² | 13.6mm | 0.17kg | 30H-FU |
| 50mm ² | 120mm ² | 6mm ² | 120mm ² | 14.7mm | 0.18kg | 40H-FU |
| 95mm ² | 185mm ² | 6mm ² | 185mm ² | 18.2mm | 0.35kg | 350M-FU |

For copper to copper connections. No special tools required.



BS 7430



Rebar clamp

| Conductor diameter | Rebar diameter | Conductor material | Weight each | Part No. |
|--------------------|----------------|--------------------|-------------|--------------|
| 8mm | 8 – 18mm | Copper | 0.32kg | BN150 |
| 8mm | 18 – 38mm | Copper | 0.75kg | BN155 |

For bonding to reinforcing bars, steam pipes, handrails etc.



BS 7430

